



HD RINZAFFO

natural hydraulic lime NHL 3.5

CALCEPURA RINZAFFO HD is a specific plaster mortar for the realization of internal or external plasters, in this case with a final surface treatment based on silicate plaster, applied by hand or machine, for interventions in green building or for high-quality historical restorations when regularization of uneven supports is required and as an anchoring layer on particularly absorbent supports such as wood-cement blocks, etc. COMPLIANT WITH UNI EN 998-1 REGULATIONS

CALCEPURA RINZAFFO HD features high permeability to water vapor and limited reactivity to salts contained in masonry, contributing to improved living comfort. The high adhesion to the substrate is ideal for roughcasting and for leveling on uneven surfaces, along with high deformability.

ADVANTAGES

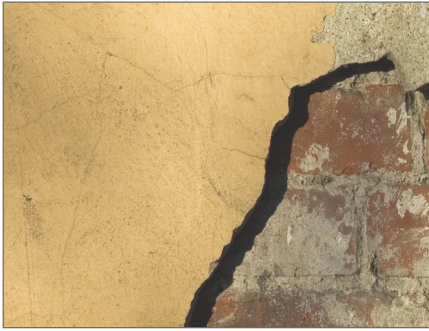
- Compatible with materials and techniques of ancient tradition
- Eliminates and prevents fungi and mold
- Highly permeable to water vapor

WARNINGS

Protect the product from rain, washing out, frost, rapid drying, or strong ventilation for at least 48 hours after application. Do not apply on gypsum substrates, plaster, painted surfaces, wooden elements, metal, or plastic. Wait at least 72 hours after the plastering before proceeding with the application of the finishing coat (FINE MORTAR or PRE-MIXED MORTAR). Before application, request specific usage instructions from our technical office: info@esincalce.com - tel. 0731.811172

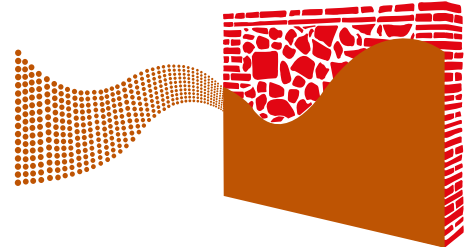
TECHNICAL DATA

<i>Class standard UNI EN 998-1</i>	GP-CS II-W1
<i>Color</i>	light hazelnut
<i>Granulometry</i>	≤ 3 mm
<i>Bulk density of powder</i>	1400 kg/m ³
<i>Bulk density of mixture (UNI EN 1015-6)</i>	1875 kg/m ³
<i>Consistency of fresh mortar (UNI EN 1015-3)</i>	83 mm
<i>Compressive strength (28 days) UNI EN 1015-11</i>	≥ 7.0 Mpa
<i>Flexural strength UNI EN 1015-11</i>	≥ 3.0 Mpa
<i>Tensile strength - Adhesion</i>	≥ 0.5 N / mm ² FP : B
<i>Mixing water</i>	18%
<i>Application temperature</i>	+5 °C ÷ +35 ° C
<i>Application time</i>	approximately 40 minutes at a temperature of 20 ° / 25 ° C
<i>Fire reaction</i>	Euroclass A1
<i>Vapor permeability coefficient</i>	μ ≤ 13
<i>Packaging</i>	25 kg bag / 64 bags per pallet
<i>Consumption</i>	approximately 15 kg / m ² per cm of thickness
<i>Storage</i>	In the original packaging and protected from atmospheric agents, the product retains its original characteristics for approximately 12 weeks



CALCEPURA
The tradition of lime.

HD RINZAFFO



SURFACE PREPARATION

The surfaces must be solid and free of dust, residues of slurry, incoherent parts, oil stains, grease, paint, lime, gypsum, or rust. Remove any friable and inconsistent parts from the masonry. Thoroughly soak the bricks, stones, or particularly absorbent blocks.

In the presence of high salinity, it is recommended to wash the entire wall with a high-pressure washer and subsequently treat it with ESICEM ANTISALE (see technical data sheet).

Pre-treat smooth or slightly absorbent substrates with a coat of fluid or semi-fluid slurry made as follows:

- 1 part water
- 1 part ESICAL LATTICE
- 2/3 parts CALCEPURA BINDER

Prepare the connection of structural elements by applying suitable plaster support mesh or embedding fiber mesh halfway into the thickness at critical points.

PRODUCT PREPARATION

Moisten the inside of the concrete mixer, taking care not to leave water deposits at the bottom.

Mix with a common inclined-axis concrete mixer or planetary mixer/drill mixer/plastering machine.

Gradually add the indicated amount of clean water (approx. 6/6.5 liters per bag) until a homogeneous mixture is obtained.

INSTALLATION

Use CALCEPURA RINZAFFO HD as a normal plaster mortar, paying attention to the thickness of the application layer (max 2 cm).

Apply a first coat at low thickness ("scratch coat") and proceed subsequently after a few hours (approximately 4 depending on the application temperatures) with the first application coat.

Wait at least 24 hours before applying subsequent layers. After 3 to 4 weeks, depending on the application temperature, finish the work with a final coat of CALCEPURA PLASTER or CALCEPURA SMOOTHING COMPOUND with a minimum thickness of 10 mm.

The data and information contained in this document are the result of the knowledge available at the date of publication.

Esincalce srl assumes no responsibility for damages to persons or property that may arise from a use of the product different from that for which it was intended. The document does not replace but complements texts or regulations that govern the activity of use.

The user has full responsibility for the precautions that are necessary for the use they will make of the preparation. For everything not mentioned, please refer to the online safety data sheet of the product esincalce.com writing to info@esincalce.com.