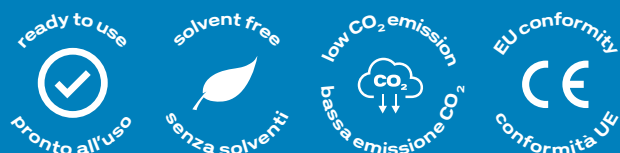


Idro Patch®

IPA200-EN

Product type

Water-reactive cold asphalt



Main features



It is activated with water



Different granulometries available



Suitable for all types of traffic



High water resistance and suitable for all seasons



Long product life



Easy to apply



Immediate opening to traffic



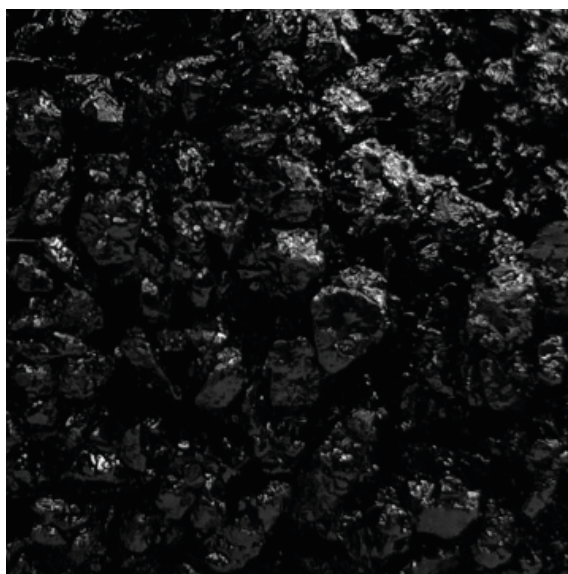
Possibility to level and refill

IdroPatch®

Description

IdroPatch is a pre-mixed, solvent-free, ready-to-use, single-component hydro-reactive conglomerate to be applied cold, which thanks to a chemical process hardens following contact with water, enabling rapid repair of the road surface without interruption of traffic. **IdroPatch** is able to withstand high-intensity loads when applied on a solid, clean, non-bending and well-compacted subfloor. With **IdroPatch**, it is possible to repair holes between 20 and 70 mm thick in a single layer. For the filling of cavities of greater thickness, it is possible to create multiple layers of overlapping product, taking care to wet and compact each single layer. **IdroPatch**, after hardening, does not undergo any softening, even at high temperatures, resists to frost and rain, and therefore it guarantees a lasting and stable result over time, completely similar to a traditional hot laid asphalt.

Constituent materials



Basalt aggregates

Based on vegetable oil

Solvent-free reactive bitumen

Application cycle

SUBFLOOR PREPARATION: The subfloor must be clean, solid, free of debris and free from the presence of free water. In the winter season, if ice is present, it is necessary to remove it to ensure adequate adhesion of the product to the support. **PRODUCT PREPARATION:** **IdroPatch** is ready to use and therefore does not require any mixing. **APPLICATION:** Pour **IdroPatch** directly into the hole to be repaired and spread it by using a trowel, spatula, squeegee or shovel until a layer of thickness slightly greater than the level of the surface to be restored has been created. Evenly wet the surface of the applied product with water (0.5-1.0 litre for each 25 kg pack). Immediately proceed with its compaction using manual pestles, vibrating plates or rammer rollers, in the case of extended surfaces. The complete hardening takes place after few hours depending on the temperature.

Certifications

CE

UNI EN 13108-1:2006

SAER-11636



Approved by:

أرامكو السعودية
Saudi Aramco



	PACKAGING TYPE	ITEM CODE	QUANTITY / PALLET	TOTAL PALLET WEIGHT
Items	IdroPatch 0/2 in 20kg buckets	BTNIDRPA0/2-20	40 buckets of 20 kg	800 kg
	IdroPatch 0/4 in 20kg buckets	BTNIDRPA0/4-20	40 buckets of 20 kg	800 kg
	IdroPatch 0/8 in 20kg buckets	BTNIDRPA0/8-20	40 buckets of 20 kg	800 kg
	IdroPatch 0/2 in 25kg buckets	BTNIDRPA0/2-25	32 buckets of 25 kg	800 kg
	IdroPatch 0/4 in 25kg buckets	BTNIDRPA0/4-25	32 buckets of 25 kg	800 kg
	IdroPatch 0/8 in 25kg buckets	BTNIDRPA0/8-25	32 buckets of 25 kg	800 kg

**Warranty/
Expiry Date**

IdroPatch, stored in the original packaging in a cool and dry place away from direct exposure to the sun or ice has a shelf life of 12 months. In the case of damaged packaging, a gradual hardening of **IdroPatch** may occur due to the presence of moisture.

**Item
specifications**

Supply of water-reactive cold conglomerate type **IdroPatch**, free of 100% solvents, which does not require any additional components, regularly usable under all weather conditions, even in case of rain, produced by a mixture of hard rock (basalt), with a granulometry up to 0/2 + 0/8, by a water-reactive hardening binder based on bitumen. Marshall stability (performed at 60°C) on samples carried out with 75 strokes per side and hardened for 3 days at 25°C in air must be greater than 1.5 kN. The workability of the material must be guaranteed between -5°C and +50°C, resistant to salt spreading and freeze-thaw cycles. The packaged product must maintain its performance characteristics for at least 12 months if stored in a cool, dry place and protected from water and direct solar radiation. The material applied must last at least 12 months in each condition of use.

Uses


**Parking areas
and junctions**

Loading/unloading yards, access ramps for footpaths, garages and private accesses, private areas, condominium areas and shopping centres.

**Pedestrian
areas**

Footpaths, cycle paths, crossings, gardens.


**Roads and
motorways**

Areas with high levels of traffic and heavy, even drainage.

Other

Airport runways, restorations on concrete surfaces and parking areas.

Technical data sheet

		REGULATIONS	U.M.	RESULT
Technical data	Inert	EN13043	mm	0/2; 0/4; 0/8
	Binder content	EN12697-1	M%	6,60%
	Volumetric mass of granules	UNI EN 1097-6	Mg/m ³	2,685
	Inert release at -20°C	EN12697-17	M%	< 55
	ITSR: tensile strength after being wetted with water at 25°C	EN12697-12	%	>80
	ITSW: residual tensile strength after being wetted with water at 25°C	EN12697-12	N/mm ²	0,8
	Vacuum content	EN12697-8	%	9,4
	VOCs (Volatile Organic Compounds)	EN14039	M%	0
	Addition of water to the weight of the product for its activation		%	2,0 - 5,0
	Compaction start after mixing the product with water	UNI EN 12697-30	minutes	5
	Compaction temperature	UNI EN 12697-35	°C	25 ± 1
	Compaction*	UNI EN 12697-30	no. of strokes per side	75
	Marshall stability at 60°C**	UNI EN 12697-34	kN	> 1,5
	Marshall stability at 25°C**	UNI EN 12697-34	kN	> 10,5

* The specimens must be tested after 3 days from packaging (1 day in the mould, then extruded and kept for 2 days at a temperature of 25°C ± 2).

**Value determined based on specimens after 3 days from packaging.

Functionality	Workability guaranteed in bag and bucket	12 months
	Functionality in a hole full of water/rain	Excellent
	Temperature of use	-5°C +50°C
	Resistance to freeze and thaw cycles	No disintegration
	Resistance on site on spider web/cracks	Greater than 12 months
	Resistance on site on downstream	Greater than 24 months
	Resistance on site in delimited hole	Greater than 36 months

Produced and marketed by

