



Diasen: who we are

Diasen was born in 1980 as a division of “Italsolventi” company, which produces thinners and detergents.

Diasen mission is to offer, since the very beginning, **eco-friendly solutions and products** for the construction industry, thus reconverting the original company.

As a company, Diasen was founded in 1999. It is now an **international company** which studies, develops and produces innovative and different products and materials, safe for humans and environment, that improves **living comfort and energy saving.**



Diasen: partnership & certifications



Diasen: what we do

- **Coatings:** multipurpose resins to coat parking areas, sport floorings, roof, swimming pool, industrial flooring
- **Energy Saving and Refurbishment:** with a cork based thermal plaster 'Diathonite', for the ecological thermal and acoustic insulation and for refurbishment
- **Waterproofing:** with solvent free liquid resin, to waterproof and protect from water roof, terraces, balconies, foundations.

Waterproofing Systems

Acriflex range

The elastic waterproofing



Acriflex Winter



Acriflex Mono



Acriflex Fybro



Acriflex ST

Acriflex Winter

2 K liquid cementitious waterproofing



Part A : water based acrylic resin

Part B : additivated cement with special additives

Resin > Powder

- Higher elasticity
- High workability
- Higher resistances to UV/weathering

Acriflex Winter

Packaging : 25 Kg plastic bucket



One bucket with liquid resin and a bag of cement

- The product can be mixed directly inside the bucket
 - Lower transport costs
 - Easier storage

Yield: 2,2 Kg/mq

With one bucket you can treat around 12 sqm (11,36)

Acriflex Winter Mixing



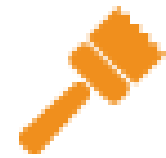
With a traditional drill mixer

Acriflex Winter Application



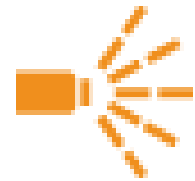
Roll

Acriflex Winter Application



Brush

Acriflex Winter Application



Airless

Acriflex Winter Application



***Water
squeegee***

Acriflex Winter

Technical features

- Elasticity 361%
- Waterproofing 9,5 ATM
 - Pot Life : 30 hours
- Crack Bridging Ability: 3,2 mm
- Ponding water resistant
 - UV rays resistant

Acriflex Winter Application fields



Terraces, Balconies, Roofing

Acriflex Winter Application fields



Swimming pools, tanks

Acriflex Winter Application fields



Foundations

Acriflex Winter Accessories

Polites

*Fiber glass mesh with anti
floating flaps*



Safety Joint Roll

*Elastic band for joints and
angles*



Acriflex Winter system

Different surfaces?
Specific primer

Different use?
Specific coating

**Smooth or non
absorbent surface**
(Grip Primer)

Bitumen surface
(Sbs-bond)

**Wet/underground
surface**
(Watstop)



ACRIFLEX WINTER

+

POLITES

(mesh)

+

SAFETY JOINT ROLL

(band for joints and
angles)



Walkable

(Floorgum Paint)

Trafficable

(Floorgum Tyre)

Reflective

(Oriplast Reflex)

Swimming pool

(Epokoat Swimming)

Acriflex Winter system

*A specific primer for any
kind of support....*

**Smooth or non
absorbent surface**
(Grip Primer)



ACRIFLEX WINTER
+
POLITES
(mesh)

Bitumen surface
(Sbs-bond)



+
SAFETY JOINT ROLL
(band for joints and
angles)

**Wet/underground
surface**
(Watstop)



Grip Primer: one component primer for smooth and non absorbent surfaces



Surfaces

- Tiles
- Plastic
- Pvc
- Metal
- Smooth surfaces
- Non absorbent surfaces

Benefits

- One component ready to use
- Simple and quick application in just one coat: roll or brush

SBS-Bond: one compone primer for bitumen surfaces



Surfaces

- Bitumen membrane
- Slated membrane
 - Asphalt

Benefits

- One component ready to use
- Easy and quick application in just one coat: roll or brush
- You avoid the costs of removal and disposal of the membrane
 - You can regularize the surface

Watstop: 3 K primer for wet /underground surfaces



Surfaces

- Cement
- CLS
- Metal
- Wood

Benefits

- It stops rising damp
- It is an excellent adhesion bridge on many surfaces
- It protects the whole dehumidification system from rising damp

Acriflex Winter system

*.... A specific coating for
any different use*

ACRIFLEX WINTER
+
POLITES
(mesh)
+
SAFETY JOINT ROLL
(band for joints and
angles)



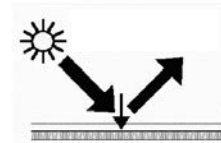
Walkable
(Floorgum Paint)



Trafficable
(Floorgum Tyre)



Reflective
(Oriplast Reflex)



Swimming Pools
(Epokoat Swimming)



Epokoat Swimming

2 K epoxy coating, an alternative to traditional mosaic tile



Benefits

- Simple and quick application: brush/roll
 - Available in different colours
 - Cheaper application
 - Excellent aesthetic result

Swimming pools and water containment: EPOKOAT SWIMMING



Swimming pools and water containment: EPOKOAT SWIMMING



Swimming pools and water containment: *EPOKOAT* SWIMMING



Floorgum Paint

One component acrylic coating for walkable surfaces, an alternative to traditional tile



Benefits

- Easy and quick application: brush / roll / airless / water squeegee
 - Available in different colours
 - Cheaper application
 - High resistance to weathering / UV / freeze-thaw cycles
- It can be protected with tiles even after sometime after its application

Walkable surfaces: FLOORGUM PAINT



Walkable surfaces: FLOORGUM PAINT



Walkable surfaces: FLOORGUM PAINT



Floorgum Tyre Mono

One component acrylic coating for trafficable surfaces



Benefits

- Easy and quick application: brush / roll / airless / water squeegee
 - Available in different colours
 - High resistance to weathering / UV / freeze-thaw cycles

Trafficable surfaces: *FLOORGUM TYRE MONO*



Trafficable surfaces: FLOORGUM TYRE MONO



Trafficable surfaces: FLOORGUM TYRE MONO



Oriplast Reflex

One component acrylic coating to protect from UV rays



Benefits

- Easy and quick application: brush / roll / airless / water squeegee
 - High resistance to weathering / UV / freeze-thaw cycles
 - It reflects 90% of UV rays
 - It contributes to thermal insulation from heat
 - Protection of the waterproofing layer
- It can be applied directly to bitumen membranes in good conditions

Reflective surfaces: ORIPLAST REFLEX



Reflective surfaces: ORIPLAST REFLEX



Reflective surfaces: ORIPLAST REFLEX



Acriflex Fybro

2 K fibre-reinforced cementitious liquid waterproofing

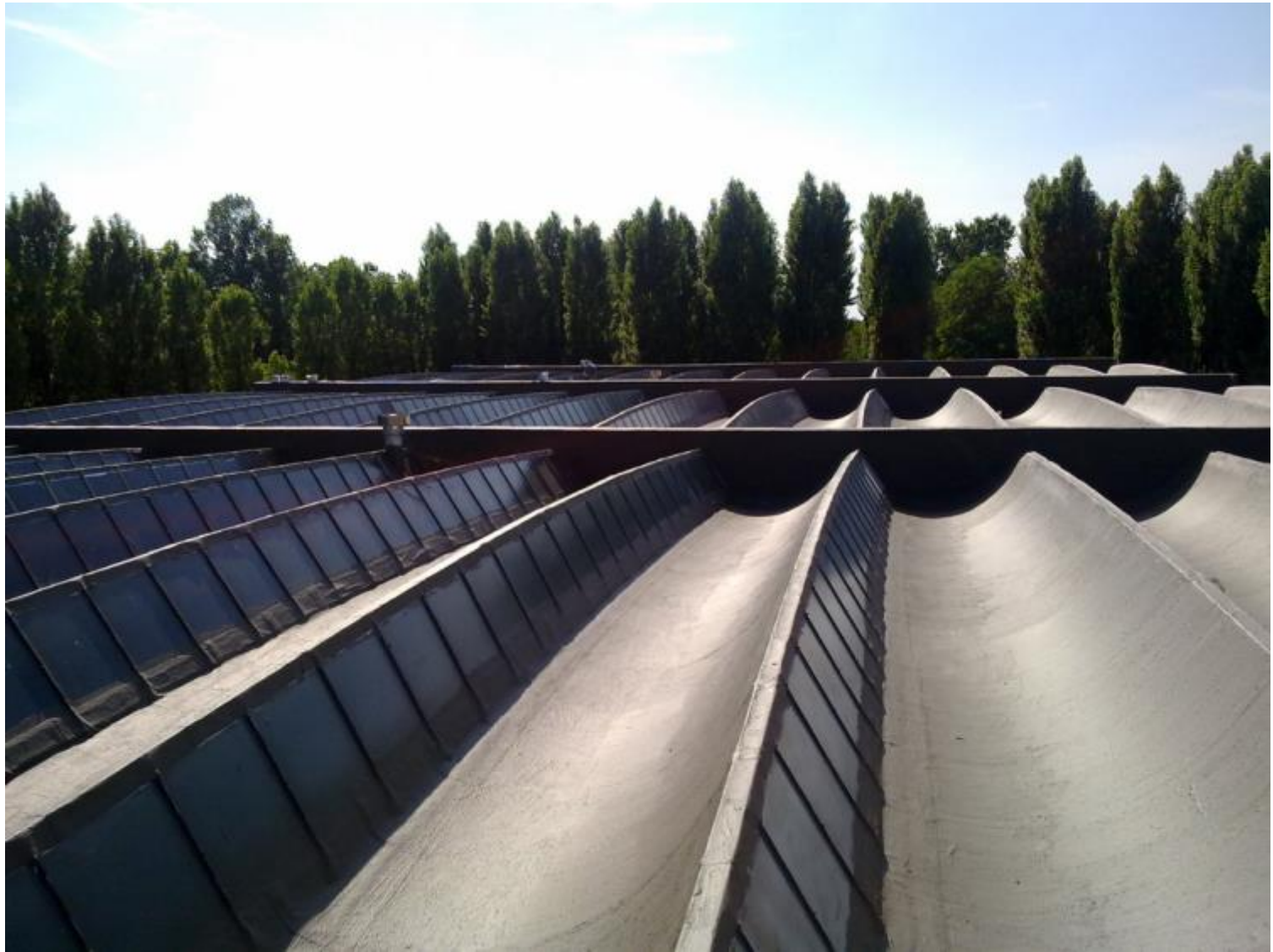
Acriflex Fybro is the fiber-reinforced version of Acriflex Winter.



Thanks to the fibers in part A (resin), it does not need a mesh.

Used for:

- Small surfaces
- Irregular surfaces
- Complex structures







Acriflex Mono

*One component coloured liquid
waterproofing*



Benefits

- Application: roll/brush
- Available in different colours
- One component ready to use



DIASEN[®]
IMPROVE YOUR BUILDING

Acriflex ST

Acrilic waterproofing putty to fill and seal



Benefits

- Application: trowel or estrusion gun
 - Available in different colours
 - One component ready to use
 - High filling properties



Not only acrylic resins...

SBS-Gum

Bitumen based one component liquid waterproofing



- Application: roll, brush, airless, water squeegee
 - One component ready to use
 - High elasticity

SBS-Gum

Foundations



Concrete slab



SBS-Gum



Cement structure (gutters, flower boxes, catch basins)

Underscreed waterproofing



Aquabit

*Bitumen based one component waterproofing, enriched with polystyrene spheres that allows a **thick application***



- Application: trowel
- One component ready to use
 - High elasticity
 - Application in just one coat
- Filling capacity: up to **5 mm** in just one coat
- It waterproofs and fills even the most irregular support

Aquabit: Benefits



- It does not require specialized workforce
 - Filling capacities
 - Cold application
- Easy and continuous application, without joints
 - Tiles can be applied directly on top of it
 - One component ready to use
 - Quick drying

Aquabit: vertical waterproofing (foundations)



Aquabit: horizontal waterproofing (balconies and terraces)



Aquabit: undertile waterproofing for balconies and terraces

STEP 1 : cleaning of the support



Aquabit: undertile waterproofing for balconies and terraces

STEP 2 : application of Aquabit



Aquabit: undertile waterproofing for balconies and terraces

STEP 3 : application of tiles with a traditional glue



O.R.A. Antirain

One component clear waterproofing for tiled surfaces



- Easy and quick application: roll or brush
 - One component ready to use
- It does not alter the aspect of the surface
 - Suitable for any kind of tile

O.R.A. Antirain



Pre-cast bentonite waterproofing for foundations and underground structures



Bentotelo

Bentonite geotextile for pre-cast waterproofing









Diajoint

Self expansive cord for construction joints







Coating

Coatings for Industrial Flooring

Epokoat range

Epoxy coatings for industrial coating

Surfaces

- Cement
- Concrete

Benefits

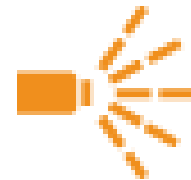
- Quick application: roll or airless
- High chemical and mechanical resistances

Application

1. Epoxy Primer: one component primer for industrial flooring made of cement or concrete



Roll



Airless

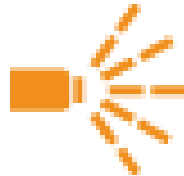
2. Epokoat

EPOKOAT EPOXY PAINT

Epoxy coating for **standard** industrial flooring



Roll



Airless

EPOKOAT PLUS

Epoxy coating with **high chemical resistance** (chemical industries)

EPOKOAT FOOD

Epoxy coating for **food factories** (slaughterhouses, butcher shops, food industry)



DIASEN[®]
IMPROVE YOUR BUILDING

Multipurpose Sport Flooring

Diasen Sport Flooring

Multipurpose sport flooring system

Surfaces

- Cement
- Concrete
- Asphalt
- Bitumen

Benefits

- Quick application: roll, brush, water squeegee or airless
 - High resistances
 - Suitable for any kind of sport
 - Available in different colours

Application

1. Sportgum: cushioning thick layer



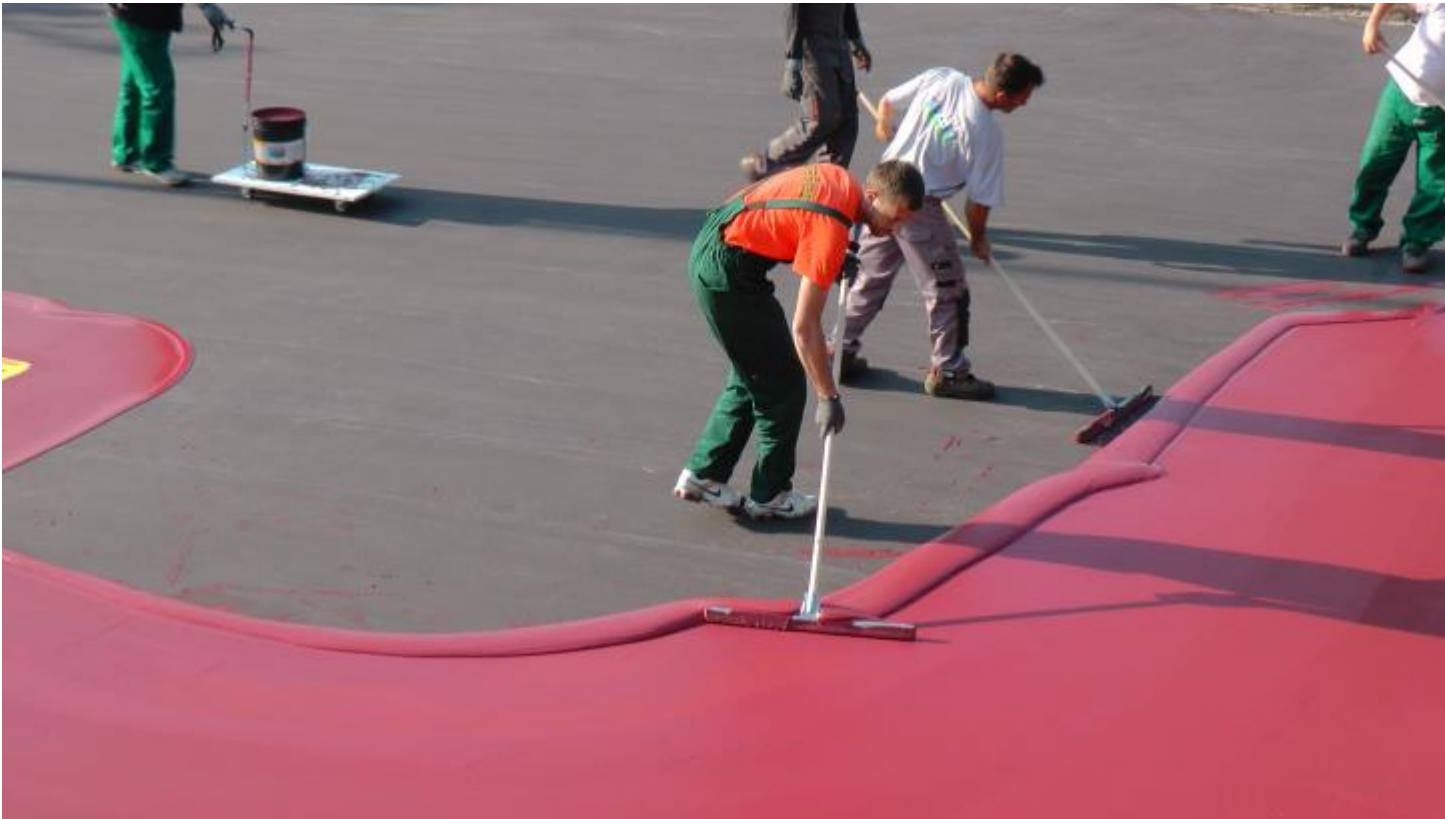
Roll



***Water
squeegee***

Application

2. Floorgum Paint: walkable coloured finish



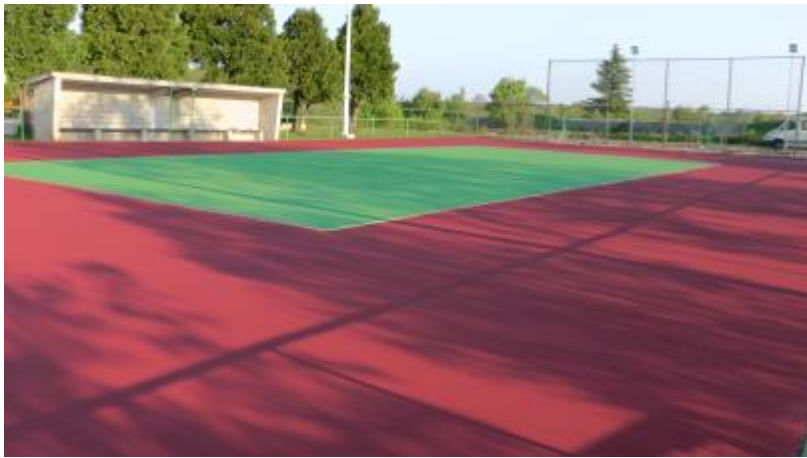
Roll



**Water
squeegee**



Airless



***DIY
Range***

C.W.C Stop Condense

*Thermal paint for interior, anti condensation
and anti mould*

Benefits

- Application: roll/brush
- One component ready to use
 - Non chemical solution
- It increase the indoor living comfort

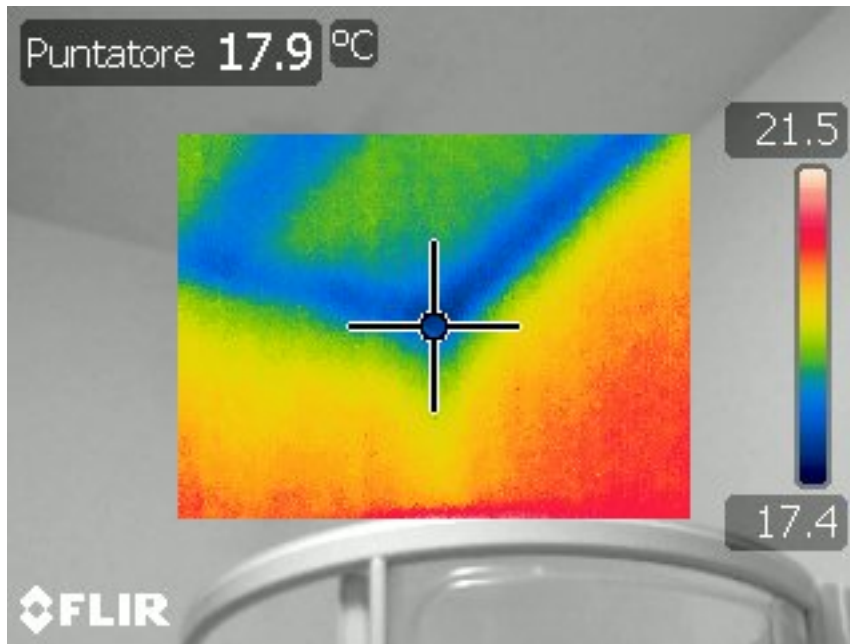




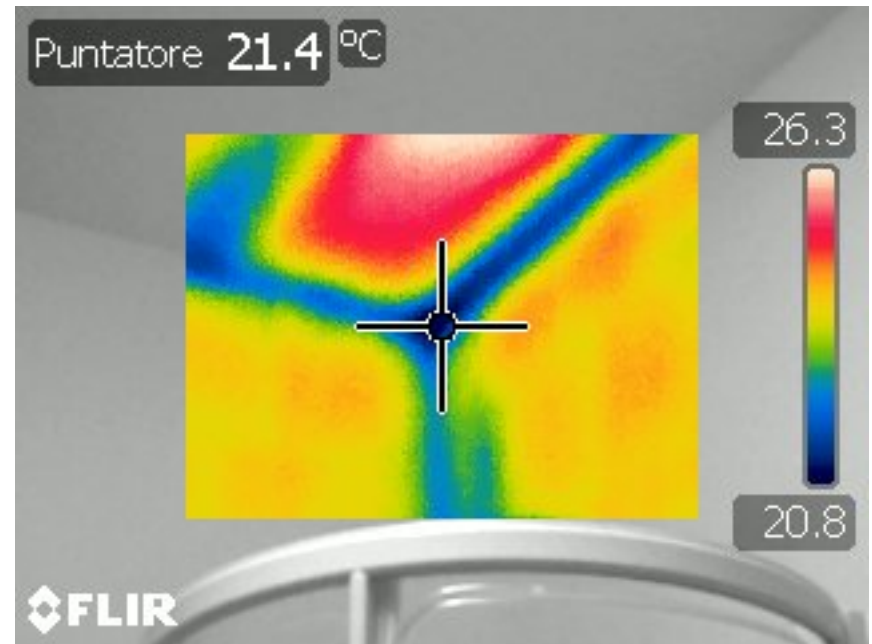
C.W.C Stop Condense: how does it work?

C.W.C. Stop Condense is able to keep the indoor wall warmer. In this way it is possible to avoid condensation that can cause mould.

BEFORE



AFTER



$$\Delta T = + 3,5 \text{ } ^\circ\text{C}$$

CONDENSATION



NO CONDENSATION



O.R.A. Antirain

One component clear waterproofing for tiled surfaces



- Easy and quick application: roll or brush
 - One component ready to use
- It does not alter the aspect of the surface
 - Suitable for any kind of tile

O.R.A. Antirain



BKK

Clear water repellent for exposed walls



- Easy and quick application: roll, brush or airless
 - It impedes water absorption
 - It protects the wall from ice
 - It avoids the formation of efflorescences
- Completely invisible: it does not alter the aspect of the masonry
 - It does not alter the breathability of the support

**Section NOT treated
with BKK**

**Section treated with
BKK**



