



Purphalt® *JOINT*

Cold and fast curing dual component polyurethane crack filler



- workable under low temperatures (-10C)
- Cold, dual component system.
Immediately ready after mixing and easy to apply
- Penetrates deep into smaller parts of the crack
- Optional chipping
- Fast curing in 30min
- after chipping ready to drive over
- no water or solvents

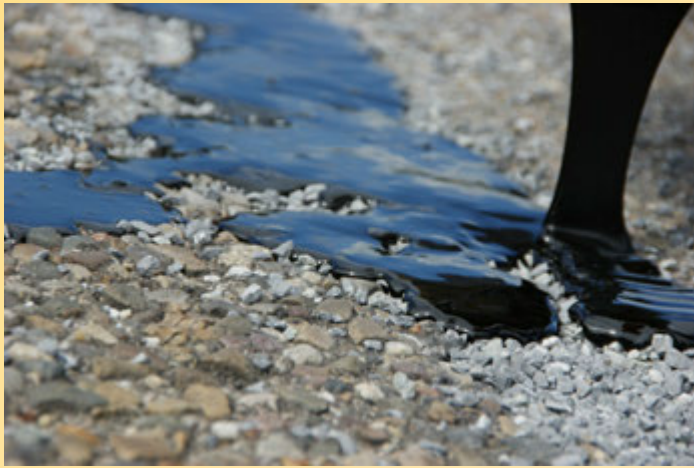
- **Reparation of cracks**
- **Stop ravelling**
- **fill joints**
- **fix elements in the road surface (led-lights)**



Crack >1cm



pre-filling
with any
suitable
material

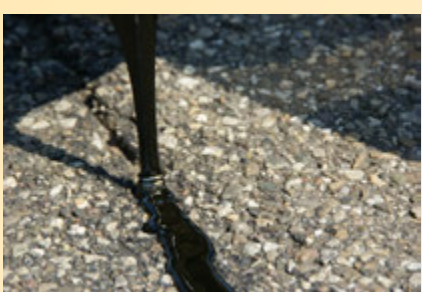
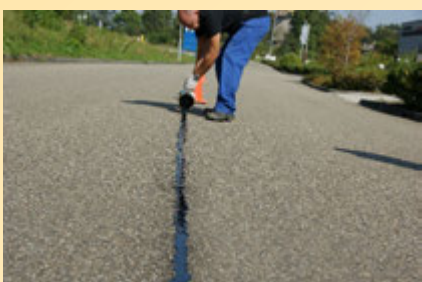


Chipping
with any
suitable
material





Cracks & Joints <1cm



side 10 cm. deep



**Purphalt
JOINT
penetrates
deep into the
crack**



